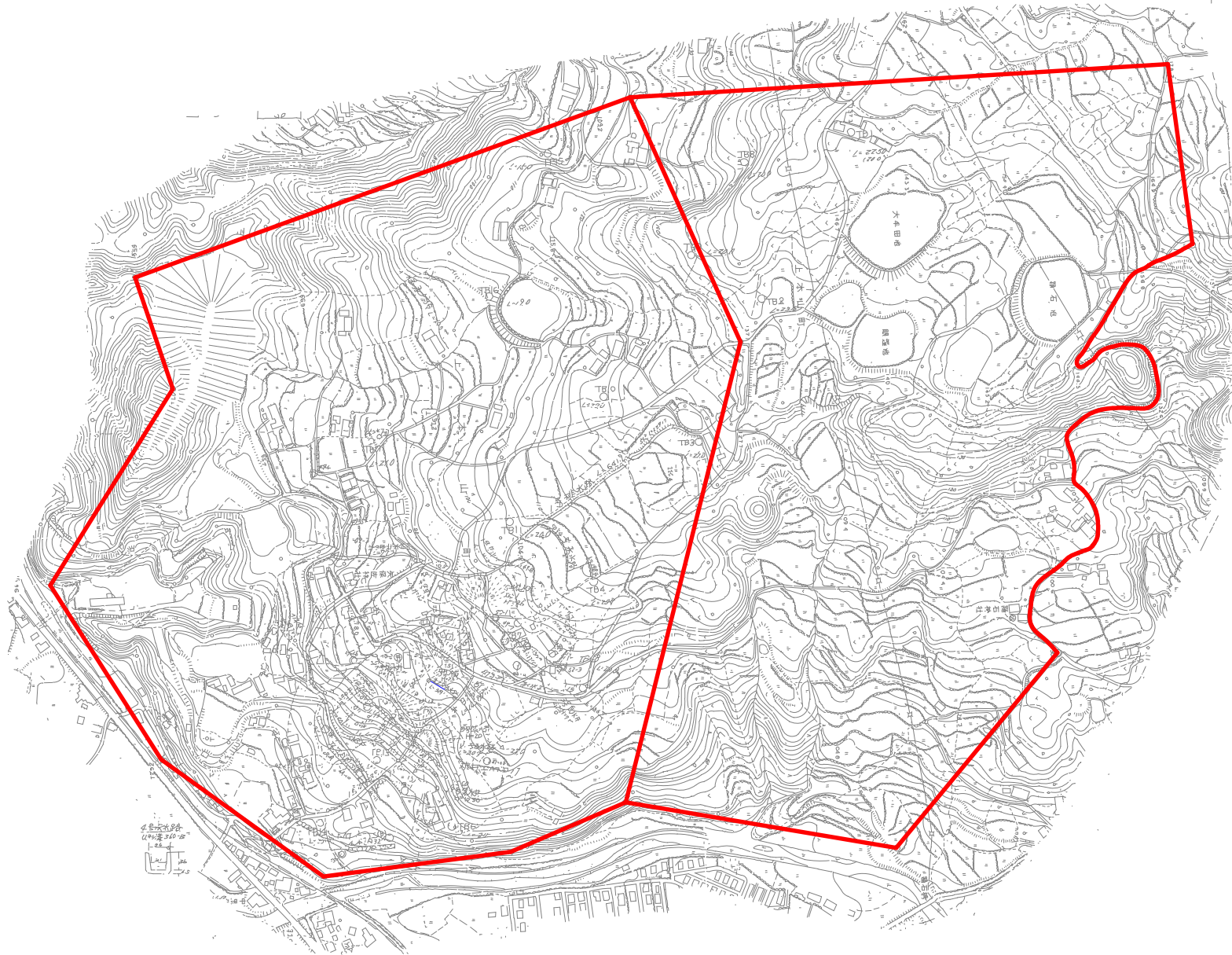
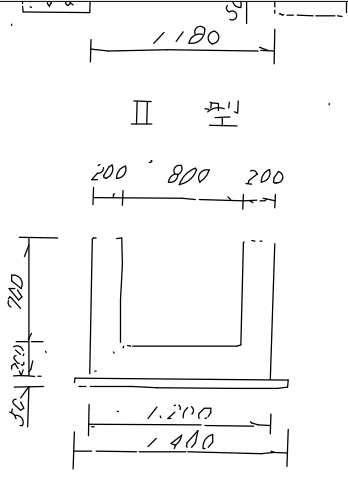
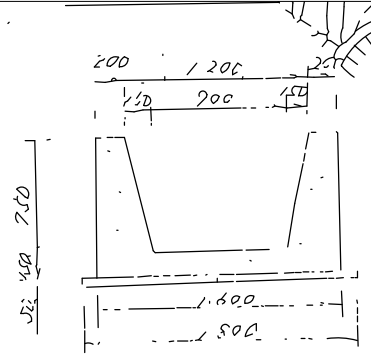
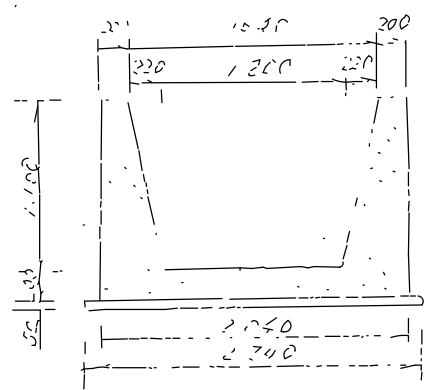


# 56. 上本山地区 地すべり防止区域図

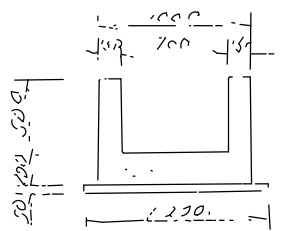




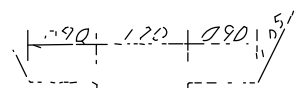
2号排水路



4号排水路

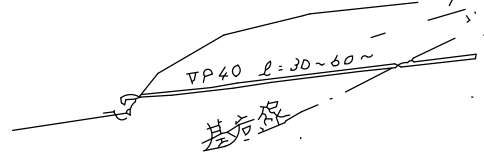


暗渠 I



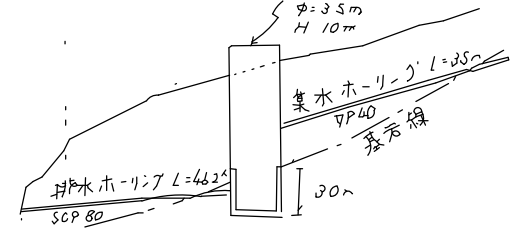
10) | パ(7°) <-200  
止水板(アスベスト板)  
仮矢板(耐陽鋼尖板)  
1=1/10m

S6162  
横孔ホ-リング工  
Cブロック



S6061 集水井五  
Cブロック

ライト-7L-1  
φ=3.5m  
H=10m



1 2.500

